

How can you

prepare for the future?



Everything you wanted to know
but were too afraid to ask!

Worried about investing?



Worried you **won't have access** to your money?



Worried about **risk**?



Worried you **won't have enough** to invest?



Worried you won't **understand**?

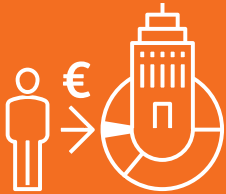
You're not alone!

This short guide strips investing of its mystique and explains how it works in plain and simple language.

Simple words that seem

complicated but really aren't!

SHARES



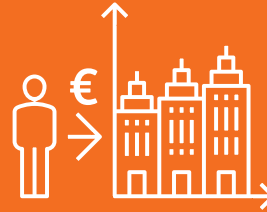
When you buy a share in a company, it means you own a small part of it.



+ € + €

It is possible to receive part of the company's profits in the form of dividends. The remainder of the profits generated will increase the value of the company and therefore of your investment.

BONDS



When you buy a bond, it means you loan money to a company or a State.



€ + %

In general, you can earn periodic interest on your investment.

Congratulations!

Buying shares backs **entrepreneurs!**

Congratulations!

Buying bonds stimulates economic **growth!**

Bottom line: When all is said and done, investing boils down to trading shares and bonds!

Tips and tricks to get you started



Timing isn't everything

First of all, you should know that looking at all costs to buy or sell at THE RIGHT TIME is not a good idea. You risk never getting started, or missing the best days of the market.



Patience is your greatest asset

Don't panic when markets jump up or down, as they always do. Investing is a long-term game. Since 1996, the lowest average return on a diversified investment over a 25-year period has been 1.56% a year for European shares and bonds.¹



Keep it simple

Start investing early and choose a diversified fund with a proven track record. If you're a beginner, don't try to hit the jackpot at once but start out small and get sound advice.



Don't put all your eggs in one basket

Invest in a diversified portfolio to offset stock market volatility and reduce your risk over the long term.



Boring is good

The portfolios with the best returns are often those of investors who rarely look at them and don't respond to market movements.



One step at a time

It is possible to invest small amounts to begin with and see how you go.

Good to know



Say you buy a cup of coffee every day for €2.50

That comes to €77 a month

Which adds up to €910 a year

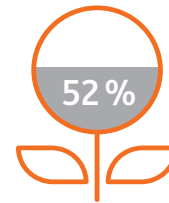


If that money were invested over 30 years at 6% annual return, it would have saved €76,000

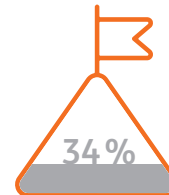
Bottom line

Investing as little as €2.50 a day can go a long way.

How do native and adopted Luxembourgers maintain or improve their **financial situation**?²



52% say they invest in **investment products**.



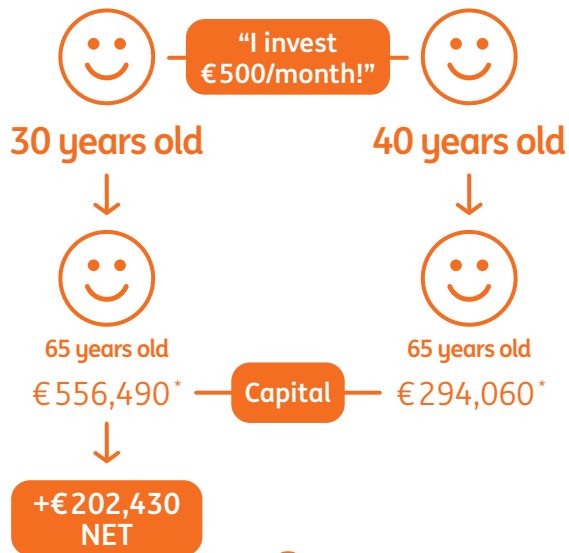
34% say they regularly set long-term **financial goals**.

Bottom line

Saving and investing are not opposites but complements. Find the balance that's right for you.

The sooner you invest, the better

It's never too early. Numbers don't lie: if you start investing at 30, by the time you turn 65 you could have won €202,430 more than if you start at 40.



Bottom line

Great oaks from little acorns grow.
You don't have to be rich to invest.

*Investing €500 per month (with an average rate of 5% per year).

The difference between saving and investing

Saving

Why?
Have cash immediately on hand
#Security



What for?
Afford unplanned expenses, whether treats or necessities



How much?*
Average annual yield in Luxembourg 0% to 2.25% gross



Investing

Why?
Grow your pool of savings over the long term
#Yield

What for?
Make your money work for you or save comfortably for your retirement

How much?*
Average annual return of 0% to 8.16% gross*

Bottom line

In the short term, saving is generally the best option. In the long term, investing usually outperforms saving. Investing carries risks. You should also always factor inflation into your considerations.

*Depending on risk profiles (conservative to aggressive). Past performances are not a guarantee of future performances.

What about investing in property?

How much do you want to make?



+118 %

House prices over 10 years in Luxembourg⁵



+102 %

Aggressive investment strategy over 10 years⁵



A "balanced" investment strategy made a return of 44.2% over the last 10 years in Luxembourg.

How much do you want to invest?



Property: minimum outlay of €300,000



Invest Plan: minimum outlay of €50/month



What matters is investing regular sums over time, not putting down big amounts.

How soon do you want your money back?



Property is not bought and sold overnight



4 days

Ex.: with Invest Plan, you get your money back within 4 working days



Some investment formulas are very flexible and it may be possible to sell only part of them. With property, if you need cash, you are forced to sell everything.

⁵ Your investment profile depends on your situation, goals and risk appetite. There are five risk profiles ranging from very conservative to very aggressive. Past performances are not a guarantee of future performances.

Bottom line: Investing in stocks and bonds and investing in property are two different strategies that both play out over the long term.

Saving while investing in property as well as in the financial markets remains the best way to have a balanced and diversified portfolio.

**Would you like to know more?
Let's talk about it!**

Until then!



**It doesn't take
much to prepare
for the future**



+352 44 99 1



26, Place de la Gare
L-2965 Luxembourg

ING Luxembourg S.A.
R.C.S. Luxembourg B.6041
T.V.A. LU11082217
BIC: CELULLULL



contactcenter@ing.lu



www.ing.lu



do your thing

Legal disclaimer

This document is an "advertising communication". It has not therefore been drawn up in accordance with the statutory and regulatory provisions relating to the promotion of independence of investment research; accordingly, reference may not be made to this document for an objective explanation of the matters addressed in it. It also follows that it is not subject to the rules prohibiting the completion of transactions before the distribution of investment research. Customers are advised to contact a tax and/or legal expert before making any investment decisions. The Customer must satisfy himself as to the suitability of the investment product in the light of the circumstances and his abilities. This document does not constitute a recommendation, offer, or an invitation for the sale, purchase or subscription of any financial instrument, in any jurisdiction whatsoever; nor does it constitute a prospectus in the sense of the legislation applicable to public offerings and/or to admissions of investment instruments to trading. In cases of divergence between this document and the prospectus, the information contained in the prospectus will prevail. Information contained in this document does not constitute investment advice. This document does not claim to give an exhaustive description of the financial instrument to which it refers, nor of (its) issuer (nor of specific risks associated with it). Although all reasonable measures have been taken to ensure the accuracy of the information it contains, neither ING Luxembourg, nor any related company or any of its directors or employees will be held liable for any direct or indirect losses, expenses, claims, compensation or other expenses that would result from the use of or reference to this document, except in the case of wilful misrepresentation or gross negligence. A decision to invest cannot be made solely on the basis of this document and must not be made until a prudent analysis of all its characteristics and risks associated to it has been carried out, as described in the "Investor Guide" and in the documentation relating to specific products or services, available on its website: www.ing.lu or with your ING advisors; the decision must also not be made until all necessary information and professional adviser guidance has been obtained (including tax advisers). The products or services described in this document may be subject to certain restrictions relating to certain persons or certain countries. ING Luxembourg, as a credit establishment, is subject to the regulation and supervision of the Commission de Surveillance du Secteur Financier (Financial Sector Supervisory Commission), 283, route d'Arion – L-1150 Luxembourg. All rights reserved. No part of this document may be reproduced, stored in a research system or transmitted in any form and by any means (mechanical, photocopying, recording, or otherwise) without the prior written permission of ING Luxembourg.

09/2023

¹ Source: ING Portfolio Management Bloomberg. Calculation from 1996 to 2021.

² Source: Ipsos survey on behalf of ING Luxembourg, 2023.

³ Source: ING analysis - 2021 - 2023.

⁴ Source: ING Portfolio Management Bloomberg. Calculation from 2013 to 2022.

⁵ Source: ING Calculation based on Housing Observatory, 2012 - 2022

⁶ Source: ING Portfolio Management Bloomberg. Calculation from 2013 to 2022.

Save up little by little

to savour tomorrow



do your thing